

CB36 Cabinet Cable instructions

The CB36 battery cabinet is designed to house the Solar MD SS214 battery modules. The cabinet also comes with integrated bus bars for parallelling the battery modules and a mounting bracket for the Logger V2.

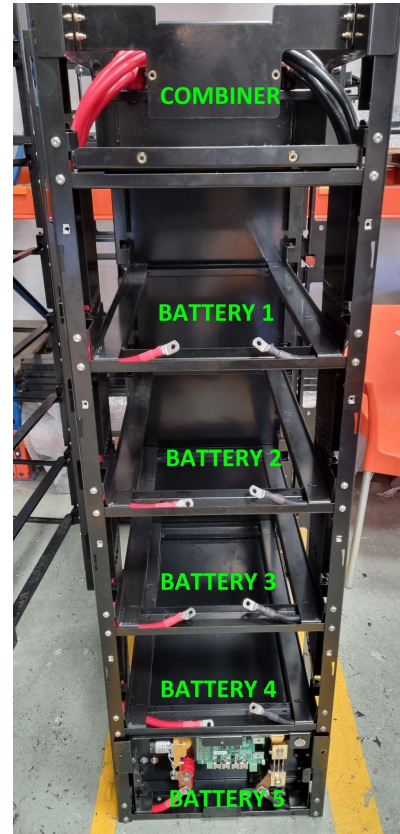
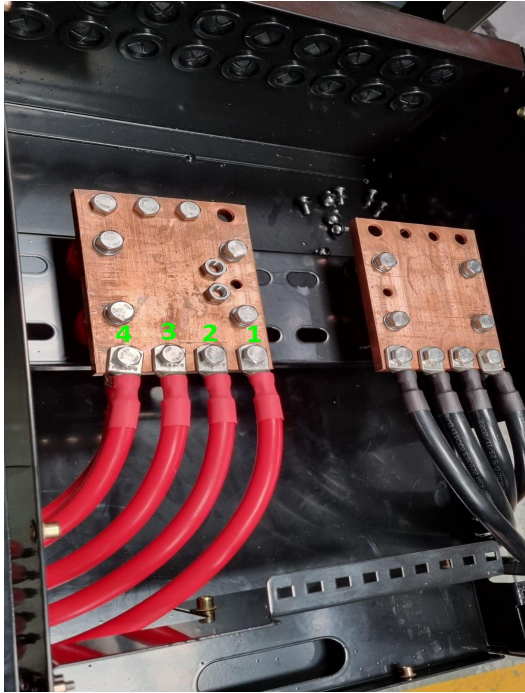
Once the cabinet rack has been assembled, the wiring of the cabinet can take place as per the guide below.

	Battery Cabinet Cable Lengths (mm)			
Cabinet type	CB35 - 4 batteries		CB36 - 5 batteries	
	Red	Black	Red	Black
Battery 1	720	720	720	720
Battery 2	970	945	970	945
Battery 3	1220	1200	1220	1200
Battery 4	1450	1445	1450	1445
Battery 5	-	-	1680	1675
Battery 6	-	-	-	-
Battery 7	-	-	-	-
Lug size	50x8 - 50x8	50x8 - 50x8	50x8 - 50x8	50x8 - 50x8
Comms cable 1	4x yellow 2m patch cables		5x yellow 2m patch cables	
Comms cable 2	3x blue 2m patch cables		4x blue 2m patch cables	

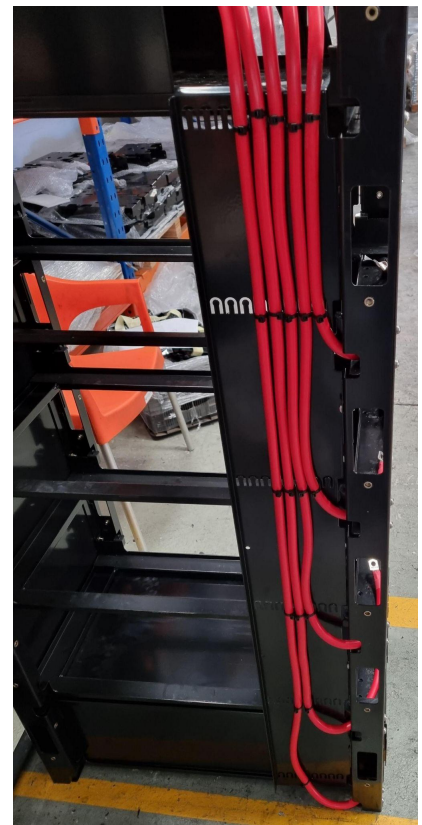
1. Assembly Steps

Positive Cable (RED)

- Fasten Battery 1 cable to the left most busbar at position 1 with the bolt, nut, spring washer and two flat washers provided.
- Fasten Battery 2 cable to the left most busbar at position 2 with the bolt, nut, spring washer and two flat washers provided.
- Fasten Battery 3 cable to the left most busbar at position 3 with the bolt, nut, spring washer and two flat washers provided.
- Fasten Battery 4 cable to the left most busbar at position 4 with the bolt, nut, spring washer and two flat washers provided.
- Fasten Battery 5 cable to the left most busbar at the underside of position 4 with the bolt, nut, spring washer and two flat washers provided.



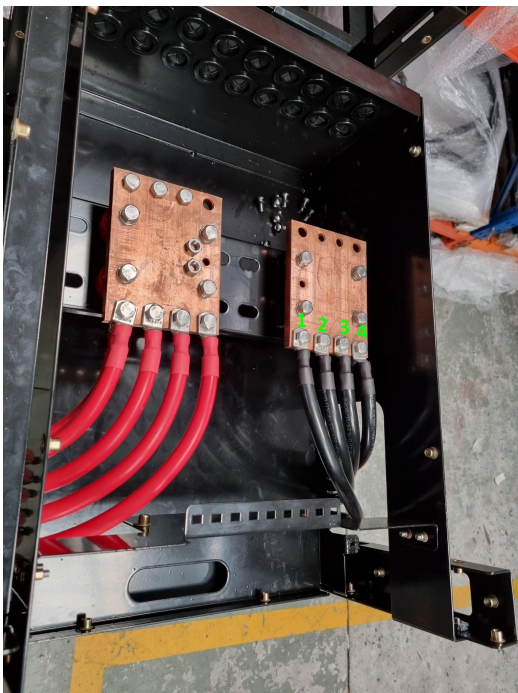
- Feed all positive cables through the side of the cabinet as shown.
- Feed Battery 1 cable through the second cable feed cutout in the frame from the top.
- Feed Battery 2 Cable through the third frame cutout.
- Feed Battery 3 Cable through the fourth frame cutout.
- Feed Battery 4 Cable through the Fifth frame cutout.
- Feed Battery 5 Cable through the Sixth frame cutout.
- Neatly secure the cables in place with cable ties.



CB36 Cabinet Cable instructions

Negative Cable (Black)

- Fasten Battery 1 cable to the right most busbar at position 1 with the bolt, nut, spring washer and two flat washers provided.
- Fasten Battery 2 cable to the right most busbar at position 2 with the bolt, nut, spring washer and two flat washers provided.
- Fasten Battery 3 cable to the right most busbar at position 3 with the bolt, nut, spring washer and two flat washers provided.
- Fasten Battery 4 cable to the right most busbar at position 4 with the bolt, nut, spring washer and two flat washers provided.
- Fasten Battery 5 cable to the right most busbar at the underside of position 4 with the bolt, nut, spring washer and two flat washers provided.



- Feed all negative cables through the side of the cabinet as shown.
- Feed Battery 1 cable through the second cable feed cutout in the frame from the top.
- Feed Battery 2 Cable through the third frame cutout.
- Feed Battery 3 Cable through the fourth frame cutout.
- Feed Battery 4 Cable through the Fifth frame cutout.
- Feed Battery 5 Cable through the Sixth frame cutout.
- Neatly secure the cables in place with cable ties.



2. Installing the modules

- Slide the battery modules into the battery cabinet, taking care to not pinch the power cables when sliding the modules in.
- Once the batteries have been installed, connect the positive cable to the batteries positive connection point, and the negative cable to the batteries negative connection point.
- Ensure positive and negative cables are properly insulated or removed where there are empty slots (see battery slot 4).

